

“

If a **WINDOW** of
OPPORTUNITY APPEARS,
DON'T pull down the **SHADE**

”



SALAMANDER
ALUMINUM WINDOW SYSTEMS

Fundermax
for your needs



V-TECH
BUILDING SYSTEMS PVT. LTD.

INNOVATION THROUGH TECHNOLOGY

German uPVC Windows & Doors Technology



V-TECH BUILDING SYSTEMS

V-TECH BUILDING SYSTEMS PVT LTD are the manufacturers of comprehensive range of customized uPVC windows and doors systems catering to all residential and commercial building requirements, specializing in the design, manufacture and installation of precision-engineered made to order uPVC window and door systems.

Our objective is to provide customized solution-not just windows and doors- for every specific need with focus on premium quality and professional service.

With rich experience and exposure in the construction industry the conceptualization of **V-TECH BUILDING SYSTEMS PVT LTD** was primarily to achieve excellence in providing uPVC solutions to the Indian market.

We manufacture quality uPVC Windows and Doors at our state-of-the-art 'Manufacturing Facility' with an installed capacity to manufacturing 80 WINDOWS & DOORS per day near ICTS - Hesaraghatta Road, Bangalore, optimally connected to the commercial hubs in the city.

V-TECH BUILDING SYSTEMS PVT LTD are Certified **SALAMANDER** partner. As a sales argument the uPVC Windows & Doors produced by us using comprehensive **SALAMANDER** Profile systems are with unbeatable quality, made to the highest standards and indeed the very basis of our success.

Apart from the Premium series, to address the need for cost-effective and quality uPVC-Windows and Doors for use in budget residential projects, **V-TECH** offers an exclusive range of **V-TECH** Series.

V-TECH BUILDING SYSTEMS PVT. LTD. are the authorized business partner's for **FUNDERMAX** in Bangalore. At **V-TECH BUILDING SYSTEMS PVT LTD** we constantly set benchmarks in designing and installing Facades using **FUNDERMAX-Max** Exterior Panels to meet the visions of architects and clients. Not only to increase the functionality of a Facade but also to add an interesting architectural & visual facet.

V-TECH BUILDING SYSTEMS PVT. LTD. are the authorized distributor's for **FOSROC Chemicals India Pvt. Ltd.** We provide time tested Solutions includes sales and application support through our well-equipped technical service department.



GLOBAL FORCE

Achieving
excellence
through **Global**
partners



Salamander Industries Produkte GmbH, a company with the tradition that date back 100 years and is still going strong. With its headquarter in Bavaria, Germany,

Salamander is a family owned business and being managed independently by the owner. It is one of the leading premium systems suppliers for high quality uPVC Profiles along with the other diversified business interests.

Superior quality profiles are complimented with equally good hardware. In order for windows to perform & function as well. We understand & appreciate the fact and hence we have associated with the best hardware available in the industry from the renowned manufacturers worldwide like GU, Siegenia, Kinlong etc.

Most of the windows are directly exposed to all kinds of weather. Therefore Quality & Strength of window glazing has to be optimal considering the application. V-Tech offers a range of insulating glass units to suit all your requirements through our partnership with Saint Gobain Glass.



OUR GLOBAL
ASSOCIATES

Fundermax
For you to prosper

SALAMANDER
WINDOW & DOOR SYSTEMS



SIEGENIA[™]
brings spaces to life

KIN LONG
For Better Living





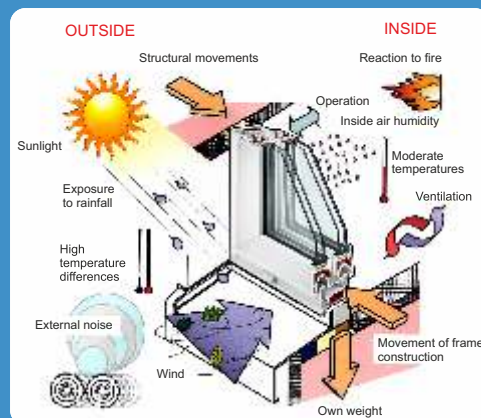
FORCES ACTING ON uPVC WINDOWS

V-TECH BUILDING SYSTEMS gives you an insight to your uPVC windows and help you understand all the technical parameters associated with it.

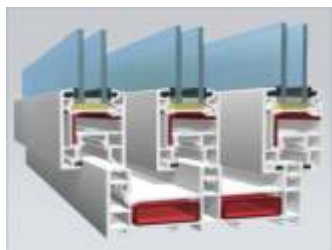
Forces acting on uPVC Windows & Doors

The strain on uPVC Windows from outside can be divided into impact of the external temperature and humidity, Sunlight, fire, wind, noise and mechanical tampering. The forces acting from inside primarily concern the room temperature and humidity, as well as possible damage through fire or through usage.

Structural movements and tolerance can result from building itself, changes in length and shape of the building component and the weight of the component can have an impact too.



BENEFITS OF V-TECH WINDOWS



Multi Chamber

Multi Chamber design with internal webs for additional stability, provides excellent heat and sound insulating properties



Reinforcement

Isolated amply dimensioned Strong galvanized Steel reinforcement imparts high inertia strength and stability to the windows & Doors



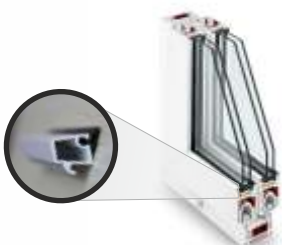
Euro Grove

Euro groove designed to European standards allows for wide variety of industrial available hardware and multi locking mechanisms to be easily installed to provide maximum security



Drainage Chamber

Specially designed drainage and pressure equalization chambers prevents energy losses, drought and entry of dust particles.



Glazing

Enhanced stability with glazing rebate height and specific glazing Block and Glazing wedges for different Glass thickness facilitates with choosing glazing beads of different sizes



Interlock

Special Interlock profiles used in conjunction with twin brush seals improves insulation performance of sliding doors and windows.

V-TECH WINDOW SYSTEMS



Sliding Window

Sliding Windows – 2 Track / 3 Track

Features :

Multi Chamber Systems

2 Track & 3 Track Sliding windows with and without Mesh provisions Capable of accepting a wide variety of single & double glazing thickness.



Casement Window

Casement Windows – Inward & Outward opening

Features :

Multi Chamber Systems

Inward & Outward opening provisions

Capable of accepting a wide variety of single & double glazing thickness.



Suitable for use in residential development, commercial buildings, Factories, Schools, Hospitals and Hotels. Provides as alternatives to conventional window systems. These types of windows compliance to various performance specific criteria makes it ideally first choice for windows.

V-TECH DOOR SYSTEMS

Sliding Door

Sliding Doors – 2 Track / 3 Track

Features :

Multi Chamber Systems

With and without Mesh provisions

Capable of accepting a wide variety of single & double glazing thickness.



Casement Door

Casement Doors – Inward & Outward Opening

Features :

Multi Chamber Systems

Inward and Outward opening provisions

Capable of accepting a wide variety of single & double glazing thickness.



It is especially suitable for use in building developments where climatic conditions in the vicinity or local building codes calls for a window system with higher than normal weather performance capabilities or when higher thermal and sound insulation properties is desired. Commonly used in high quality residential developments like condominiums, bungalows, villas, hotels and top grade commercial buildings.

SPECIAL MODULES



V-TECH - Slide & Fold



The **V-Tech** Slide and Fold door offers contemporary style, practical design and excellent reliability. The Fold and Slide door Provides superior operating performance and smooth integration into any architectural style.

V-TECH -Tilt & Turn



The **V-Tech** Tilt & Turn window is a versatile system and is ideal for many different types of installation from high rise blocks to domestic houses. It is secure, easy to operate and looks stunning with any house style.

V-TECH - Lift & Slide



The **V-Tech** lift and slide door has unequaled ease of use and effortless operation and is a popular choice for opening up large expanses.

This system enables ease moments of large and heavy panels with very little effort whilst having weather tightness thermal and acoustic insulation thus providing with highest level of comfort and greatly enhances the inhabitants living or working environment.

COLOURS



Golden Oak



Dark Oak



Mahogany



Walnut



Grey

WHY V-TECH

Our products are Unrivalled in Quality,
Technological Innovation & Exceptional Design

At V-TECH windows, we understand the importance of quality and have structured our processes to build and install windows and doors of the highest quality.

Starting from our very initial call to you or from your initial contact with our sales team through the initial quote, order confirmation, manufacturing quality assurance, delivery, site inspection, installation, post installation, quality check and continued through service requests, we rely on well defined processes and strive hard to execute these processes to our best ability.

At V-TECH windows, we believe that strong processes are our core competency and a key differentiation between the competition and us.

Whatever be your need: Performance, Aesthetics, Flexibility, Efficiency and Safety.



OUR STRENGTH



V-Tech Building Systems was established in 2012 with a team of professionals having strong experience in the building material industry. Currently having a state-of-art manufacturing unit of 20000 sqft with advanced machineries and dedicated work force of 100 employees at factory. **V-Tech** has facilitated with residential quarters for employees.

V-Tech Building Systems Pvt. Ltd. established by the Co-founders **Mr. Bhargav** and **Mr. Ishwar** who have rich experience over two decades in the field of building material products.

To be more closely connected with customers V-Tech has an Experience Centre with Sales & Service office at Rajajinagar, Bangalore.

Such a reputation as **V-Tech** has for expertise and experience can only be maintained with serious dedication to the training and support at all levels, that's the reason that **V-Tech** has put in dedicated efforts and investments to build upon the support infrastructure and human resource.

The unparalleled success and rise of **V-Tech** can be attributed to the three fundamental strengths.

- ◇ Technological Advantage
- ◇ International Know-how
- ◇ Uncompromising quality & improvement

Premium Products with Quality



FUNDERMAX



V-Tech Building Systems Pvt Ltd is most Proud Authorised Partner of Fundermax India Pvt Ltd. High Pressure Laminates and façade panels from Fundermax. The façade is the business card of every building together with windows, doors and balconies. It shapes the appearance of both private houses and public buildings.

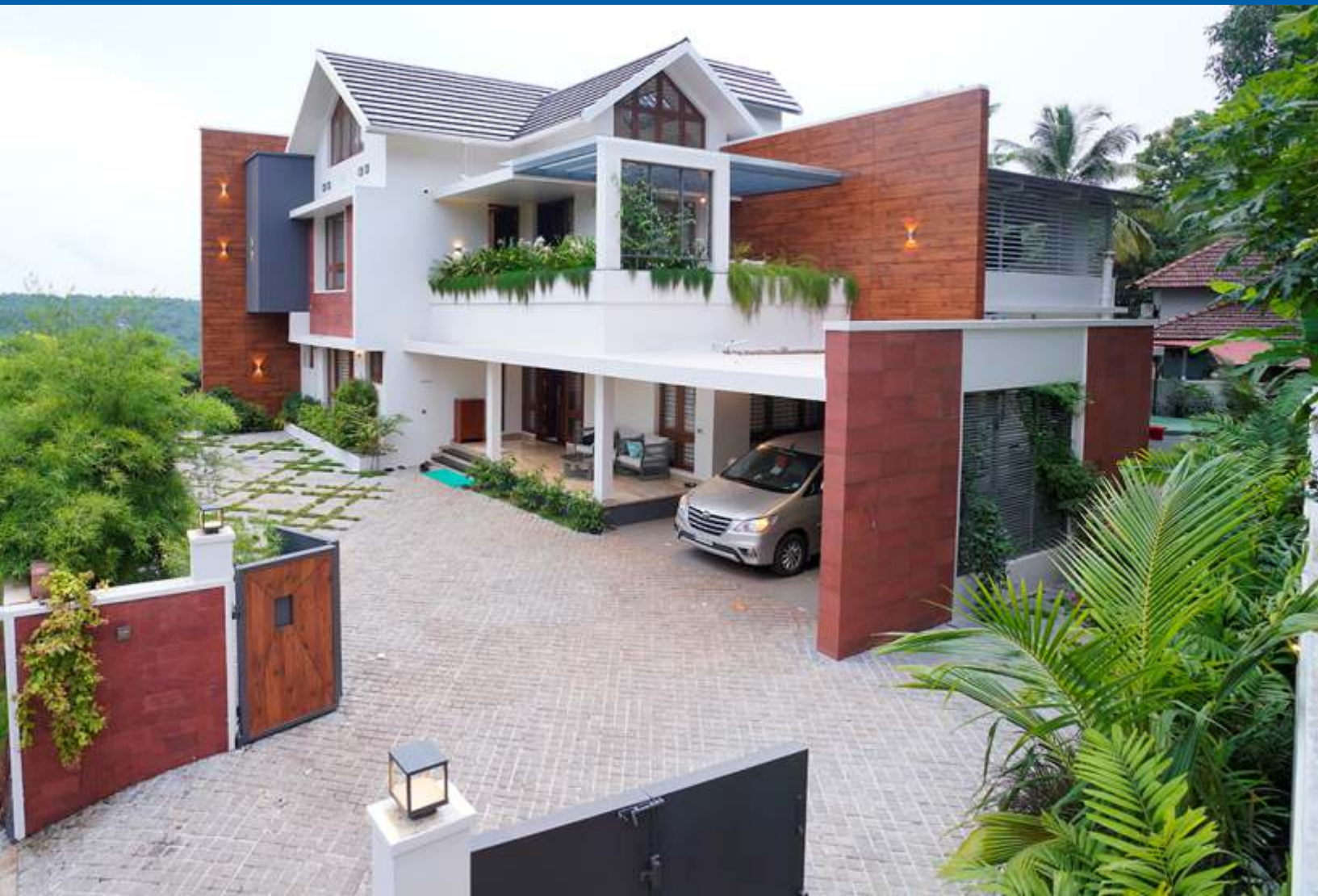


FUNDERMAX



Façade designs require high pressure laminates that are fire proof, weather proof, scratch and impact resistant and lightfast. Another important factor for facades is being able to create a unique appearance. That is why Fundermax offers high quality façade panels that are not only durable, but also available in a wide variety of decors. The façade design is subjected to both technical and aesthetic requirements. For its façade panels, Fundermax relies on high – quality materials and processing methods in combination with a wide variety of decors and surfaces.

The m.look Exterior and Max compact panels in the Exterior F_ Quality and Authentic F-Quality versions meet the highest quality requirements in terms of safety, panel thickness and dimensions as well as installation and sustainability.



FOSROC commenced its Indian operations in 1981 and established a 100% subsidiary in 1999.

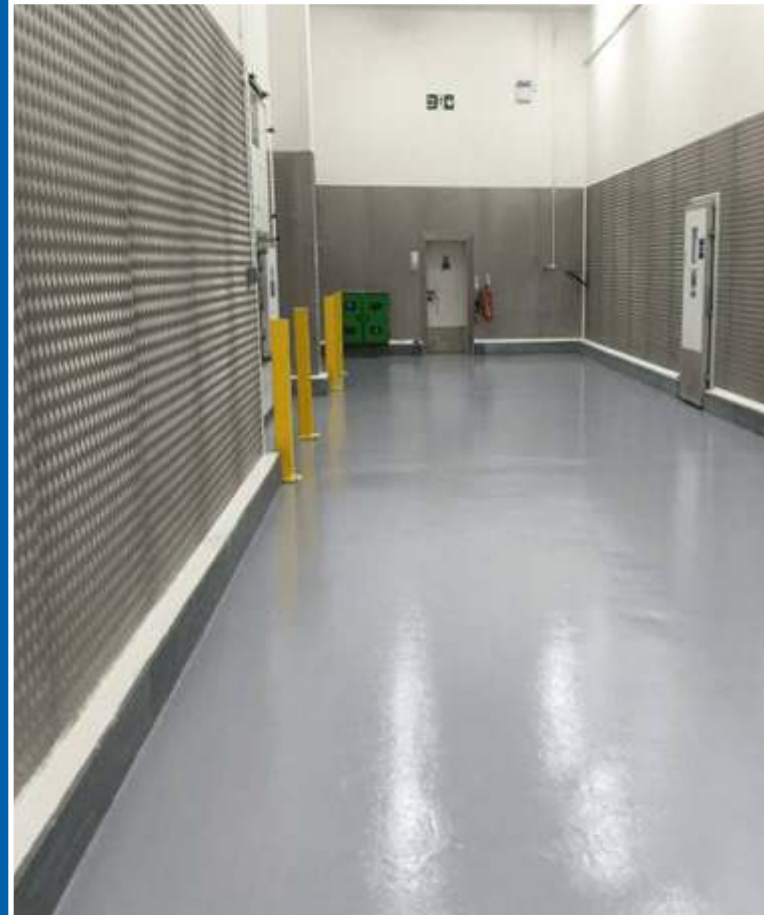
FOSROC has four state-of-the-art manufacturing facilities at Bengaluru, Karnataka, Ankleshwar, Gujarat; Kolkata, West Bengal and Keshwana, Rajasthan.

V-Tech Building Systems Pvt. Ltd. Works closely with its customers, including distribution and applicator associates, through its well-equipped technical service department, a network of sales engineers, customer service professionals, concrete technologist, specification team etc. Fosroc India prides itself for the level of technical and customer support that it gives to its valued Customers.

International leverage gives Fosroc the opportunity to offer tried and tested solutions from one geographical region to another with great confidence.

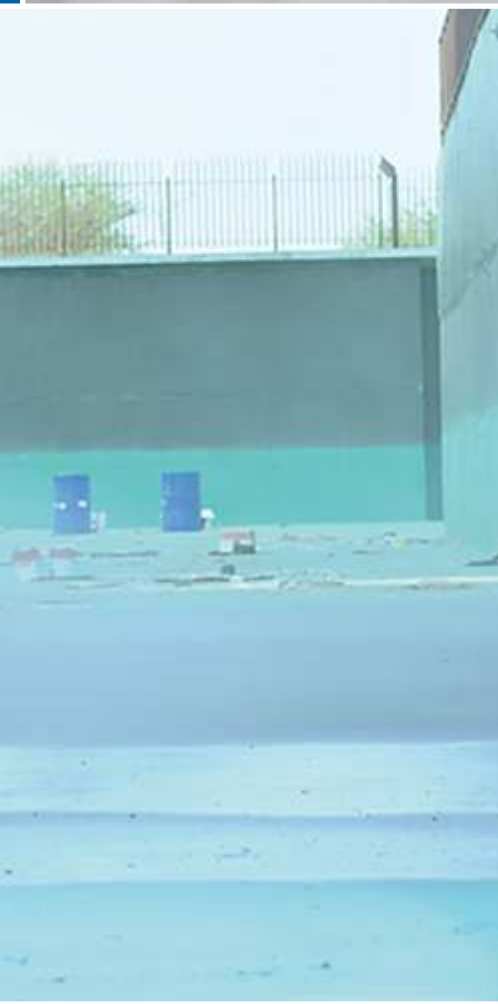
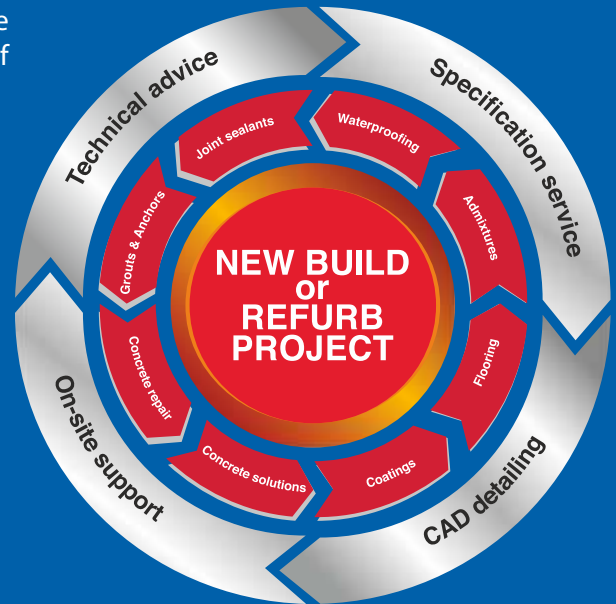
V-Tech Building Systems Pvt. Ltd. provides time-tested solutions that include services such as:

- Diagnosis and specification support
- Application Support
- Distribution support
- After-sales service
- Mix design support



V-Tech Building Systems Pvt. Ltd. remains focused on the industry, infrastructure and building segment with a wide range of Building Segment with a wide range of quality products.

- Admixtures and surface treatments
- Grouts and Anchors
- Industrial Flooring
- Concrete Repair
- Protective Coatings
- Joint Sealants and Adhesives
- Waterproofing
- Cement Additives





V-TECH BUILDING SYSTEMS PVT. LTD.

Head Office & Experience Centre:

No. 693, M.N.S. Arcade, East Facing, 1st & 3rd Floor,
Dr. Rajkumar Road, 6th Block, Rajajinagar,
Bengaluru - 560 010. | Ph. : 080-23101277

Cell : +91 **99801 11468, 97404 22863**

E-mail: vtechbuildingsystems@gmail.com

Web: www.vtechwindows.com / www.vtechfacade.com

Works:

No. 162/1, N.S.R. Complex, East Facing,
Beside ICTS, Kalenahalli, Shivakote,
Hesaraghatta, Bengaluru - 560 089.

Our Channel Partners

